



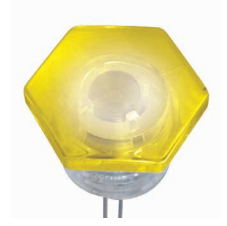
- TRACT SWITCH
- PUSH BUTTON SWITCH
- LED TOUCH SENSOR SWITCH
- 5 DIRECTION NAVIGATION SWITCH WITH LED
- MEMBRANE SWITCH
- LED LIGHT BAR
- SLIDE SWITCH
- ROTARY SWITCH
- ROCKER SWITCH
- DETECT SWITCH
- ENCODER
- INTERRUPTER
- MINIATURE MICRO SWITCH
- TELEPHONE HOOK SWITCH
- DOOR SWITCH
- MINI SIZE SOCKET
- KNOB
- CAP SYMBOL

Feature :

- Excellent IR-cut performance
- Close responsively to the human eye spectrum
- Light to current, analog output
- Wide supply voltage range, 1.8V to 5.5V
- Custom made housing available

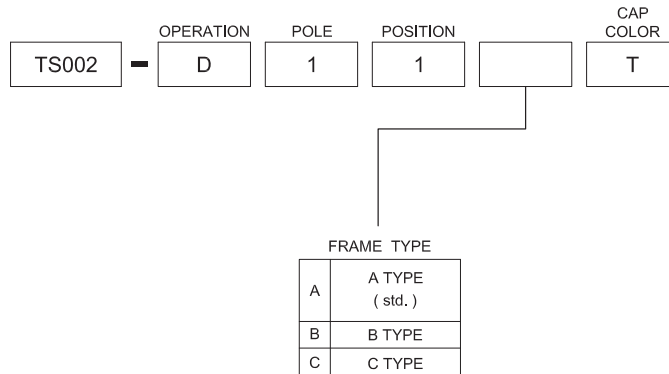
Application :

- Indoor lighting
- Ambient light monitoring
- CCTV security equipments



SWITCH SPECIFICATIONS						
POLE - POSITION			SPST			
SUPPLY VOLTAGE			Vcc : 1.8 - 5.5V @ Ta=25°C			
DARK CURRENT	SYMBOL	Min.	Typ.	Max.	UNITS	TEST CONDITION
	I _D	-	0.05	0.1	uA	Vcc = 3V , Ev = 0Lux
LIGHT CURRENT	I _{PH1}	1	3	-	uA	Vcc = 3V , Ev = 10Lux
	I _{PH2}	10	30	-	uA	Vcc = 3V , Ev = 100Lux
	I _{PH3}	100	300	-	uA	Vcc = 3V , Ev = 1000Lux
	I _{PH4}	100	300	-	uA	Vcc = 3V , Ev = 1000Lux
SENSITIVITY WAVELENGTH RANGE			λ : 390~700 nm			
ANGLE OF HALF SENSITIVITY			2θ _{1/2} : 143 Deg.			
OPERATING TEMPERATURE RANGE			-40°C ~ 85°C			
STORAGE TEMPERATURE RANGE			-40°C ~ 100°C			
SOLDERING TEMPERATURE RANGE			260°C			

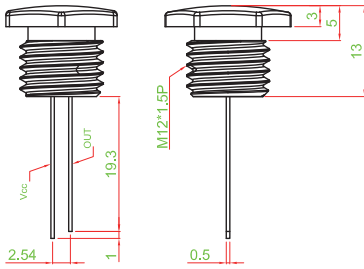
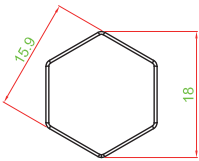
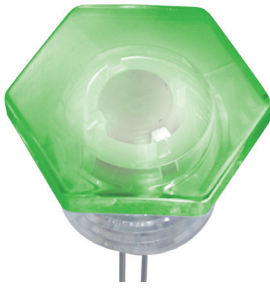
► **HOW TO ORDER**



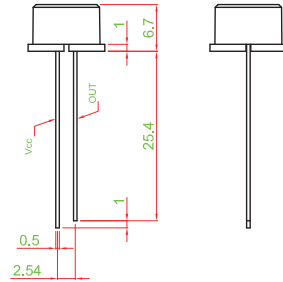
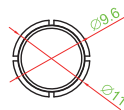
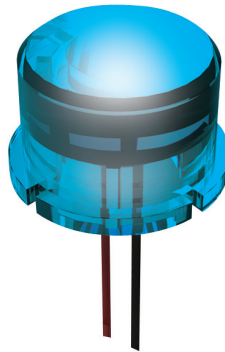


► FRAME TYPE

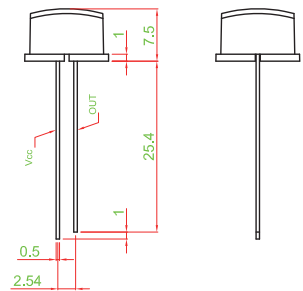
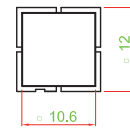
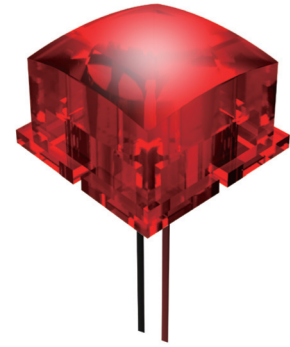
TS002-D11AT



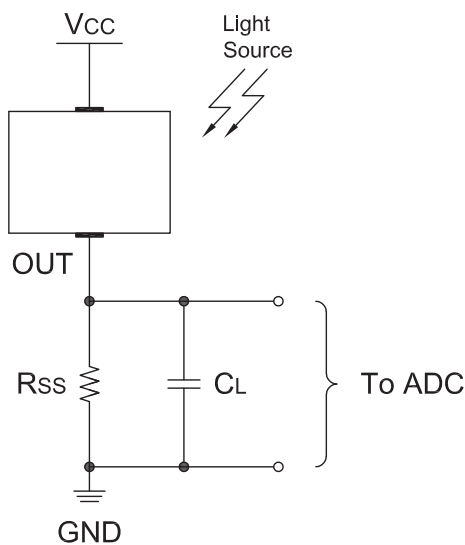
TS002-D11BT



TS002-D11CT



► CIRCUIT



► BASIC KNOWLEDGE

Condition	LUX(Illumination)
Under Bright Sun	Tens of Thousands LUX
Cloudy	About 1500 LUX
Store	About 800 LUX
Living Room	About 200~300 LUX
2M From 40W fluorescent lamps	About 120 LUX
2M From 17W Power Saving Bulb	About 60 LUX
2M From 40W Light Bulb	About 40 LUX
2M From 5W Light Bulb	About 5~10 LUX

TACT SWITCH

PUSH BUTTON SWITCH

LED TOUCH SENSOR SWITCH

5 DIRECTION NAVIGATION SWITCH WITH LED

MEMBRANE SWITCH

LED LIGHT BAR

SLIDE SWITCH

ROTARY SWITCH

ROCKER SWITCH

DETECT SWITCH

ENCODER

INTERRUPTER

MINIATURE MICRO SWITCH

TELEPHONE HOOK SWITCH

DOOR SWITCH

MINI SIZE SOCKET

KNOB

CAP SYMBOL