



Feature :

Bi-color LED illuminated available
Lock / non-lock function

Application :

Consumer products
Computer products
Instrumentation
Communication equipments
Automotive

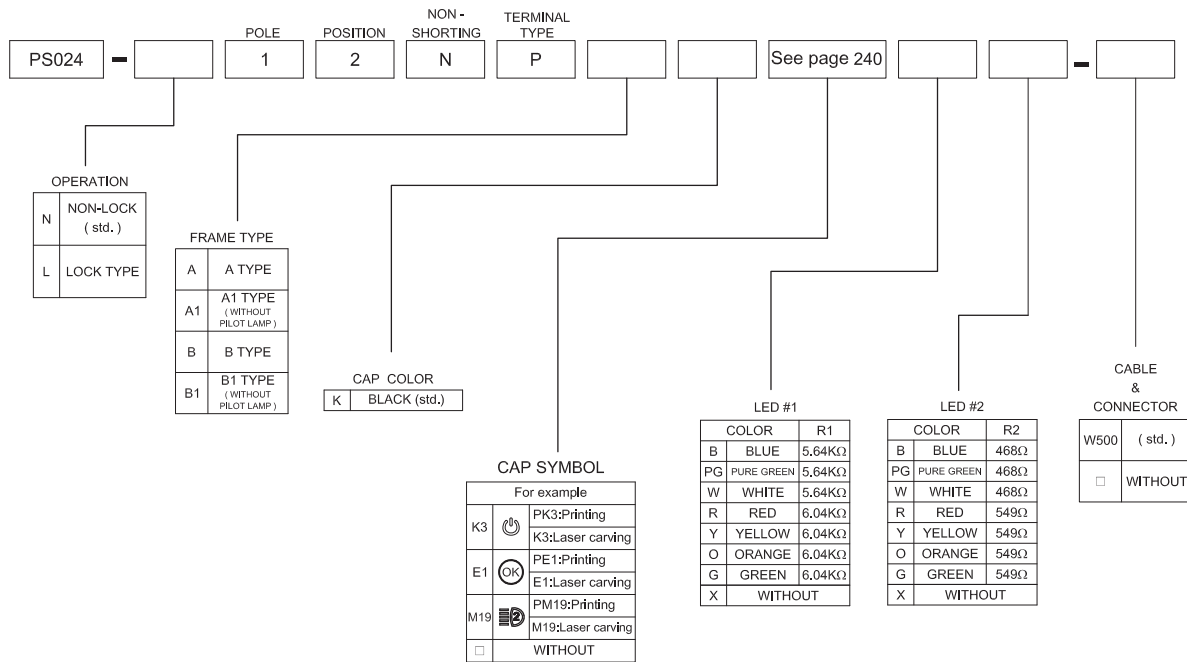


SWITCH SPECIFICATIONS	
POLE - POSITION	SPDT
CONTACT RATING	12 V DC , 50 mA
CONTACT RESISTANCE	50 mΩ MAX. 1.5 V DC ; 100 mA , by Method of Voltage DROP
INSULATION RESISTANCE	100 MΩ MIN. 500 V DC for 1 minute
DIELECTRIC STRENGTH	Breakdown is not Allowable ; 500 V AC for 1 Minute
OPERATING FORCE	250 ± 50 gf
OPERATING LIFE	50,000 cycles
OPERATING TEMPERATURE RANGE	-40°C ~ 85°C
TOTAL TRAVEL / OPERATING TRAVEL	2 ± 0.3 mm / 1.0 ± 0.3 mm

LED SPECIFICATIONS		Value / LED Color						
<p>ATTENTION LEDs are Electrostatic Sensitive devices</p>	Unit	Blue	Pure Green	Red	Yellow	Orange	Green	White
		LUMINOUS INTENSITY@20mA I _v	mcd	80	150	220	180	320
Dominant Wavelength λ _D	nm	465	525	630	590	601	567	/
FORWARD VOLTAGE@20mA V _f	V	3.3	3.2	1.95	2	2.1	2.1	3.3

■ A single bin cannot be ordered, please contact us in advance if you need a particular bin sorting before placing your order to clarify the lead time, MOQ and pricing

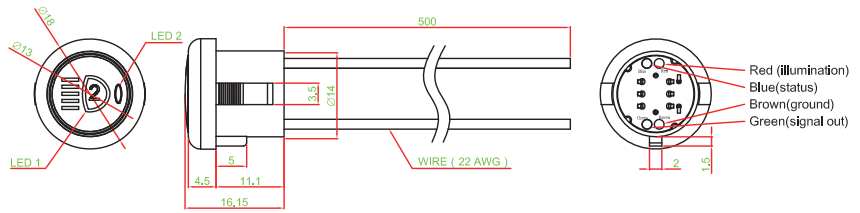
▶ HOW TO ORDER



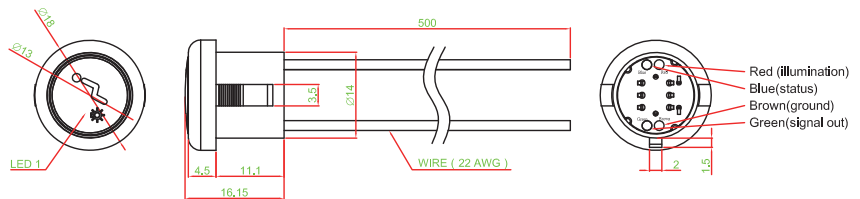


► DIMENSION

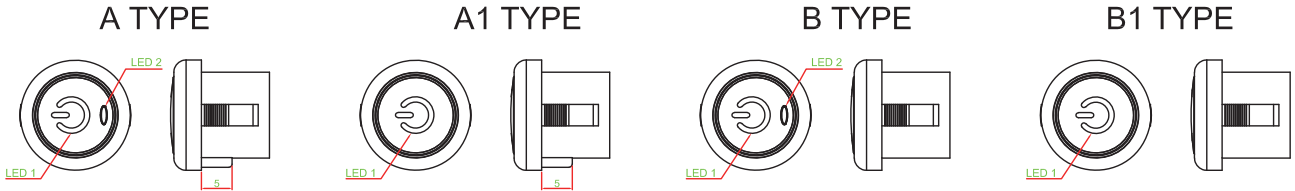
PS024-N12NPAKM19□□-W500



PS024-L12NPB1KO19□□-W500



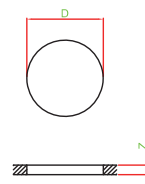
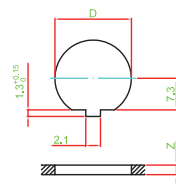
► FRAME TYPE



► PANEL CUT OUT

FRAME : A

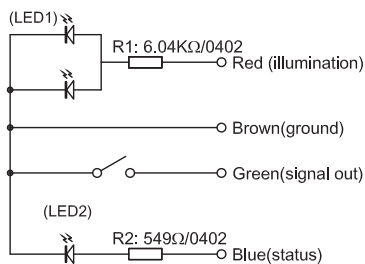
FRAME : B



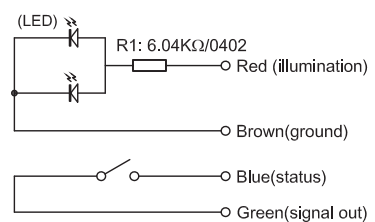
Z	D
1.0 ~ 2.0	16.2 ~ 16.4
2.0 ~ 2.5	16.4 ~ 16.8
2.5 ~ 3.0	16.8 ~ 17.0

► CIRCUIT

FRAME : A&B



FRAME : A1&B1



- TACT SWITCH
- PUSH BUTTON SWITCH
- LED TOUCH SENSOR SWITCH
- 5 DIRECTION NAVIGATION SWITCH WITH LED
- MEMBRANE SWITCH
- LED LIGHT BAR
- SLIDE SWITCH
- ROTARY SWITCH
- ROCKER SWITCH
- DETECT SWITCH
- ENCODER
- INTERRUPTER
- MINIATURE MICRO SWITCH
- TELEPHONE HOOK SWITCH
- DOOR SWITCH
- MINI SIZE SOCKET
- KNOB
- CAP SYMBOL