

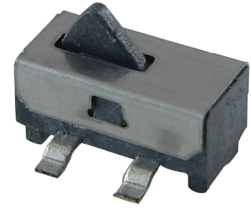


Feature :

Small size
SMD reflow soldering

Application :

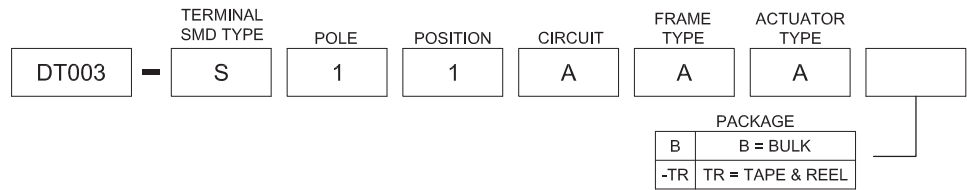
Detection of position
Mode of mechanism



SWITCH SPECIFICATIONS

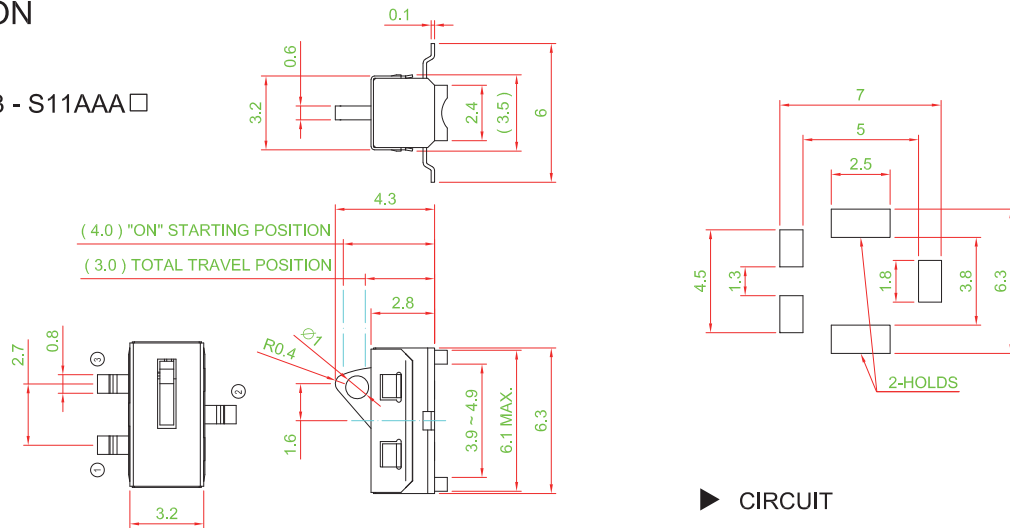
POLE - POSITION	Momentary action , SPST
CONTACT RATING	5 V DC , 1 m A
CONTACT RESISTANCE	500 mΩ MAX. 5 V DC ; 1 A , by Method of Voltage DROP
INSULATION RESISTANCE	100 MΩ MIN. 500 V DC for 1 minute
DIELECTRIC STRENGTH	Breakdown is not Allowable ; 500 V AC for 1 Minute
OPERATING FORCE	50 gf MAX.
OPERATING LIFE	50,000 cycles
OPERATING TEMPERATURE RANGE	-20°C ~ 70°C

▶ HOW TO ORDER



▶ DIMENSION

DT003 - S11AAA □



▶ CIRCUIT

